

Cherry Creek Improvements

Pavement and Drainage Improvement Project

Estimated Duration of Traffic Impacts: Mid-March through July, 2014

North Bound Josephine from 1st to 2nd Avenues

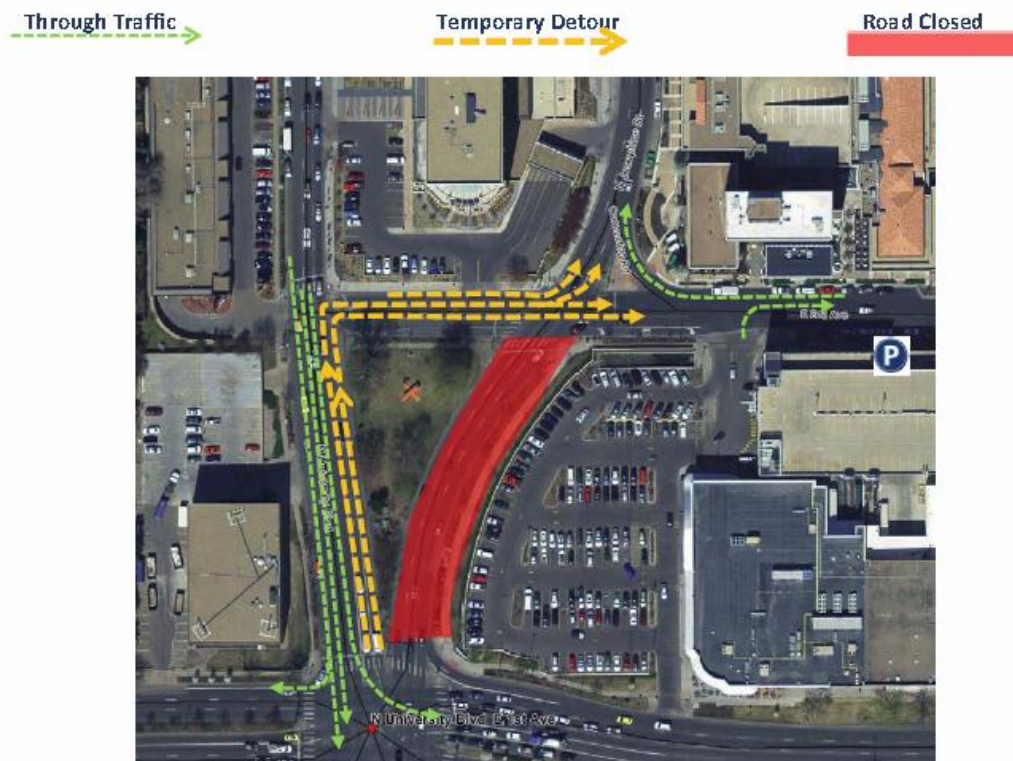
Work on the Cherry Creek Improvements project will begin in the northbound lanes of Josephine between 1st and 2nd Avenues in mid-March and may continue through July. To accommodate this phase of work, the northbound traffic will be diverted to the eastern-most lanes of University Blvd. running two-way traffic on University/York from 1st to 2nd Avenues. Additional related detours will be needed in the area and will be marked.

Work will include the removal of the existing drainage structures, placement of a six and a half foot diameter storm drain pipe down the center of Josephine Street, construction of new drainage structures, milling and removal of the existing pavement, grading and preparation of the subgrade and concrete paving. Phase two of the work in this area will begin in April and will focus on the drainage improvements on 2nd Avenue. This traffic configuration through the 1st Avenue intersection, on University Blvd., on 2nd Avenue and on Josephine, will require the patience and attention of all drivers. Work will progress as quickly as possible but is contingent on conditions encountered and weather conditions.

Please be sure to always use caution in the work zone!!!

For questions please visit our website at <http://cherrycreekimprovements.com>

or contact the project hotline at 303-730-4522.



All dates and times are approximate and may be impacted by weather events or unforeseen conditions.