

## Pavement and Drainage Improvement Project

**Estimated Duration of Traffic Impacts: Mid-March – June, 2014**

**Southbound University from 6<sup>th</sup> Avenue to 2<sup>nd</sup> Avenue**

Street reconstruction has begun on southbound University Blvd from 6<sup>th</sup> to 2<sup>nd</sup> Avenues with work continuing into June. The paving process involves the removal of existing pavement, preparation of the subgrade and new paving. The contractors will construct the western half of the street first and then switch over to complete the eastern half. Other work will involve storm drainage, curb, gutter and driveway work as needed. Some additional concrete sidewalk is being added near the bus stop at 6<sup>th</sup> Ave. The project team will communicate with business owners and local residents regarding driveway access. Driveways will be accessible except when concrete paving is going on and the new concrete is curing.

Please note concrete crews will be working evenings in order to make saw cuts to the newly poured concrete. The timing of the saw cut is critical as it must be done at a specific time during the curing process. Crews will be off-site no later than 9 p.m.

**Please be sure to always use caution in the work zone!!!**

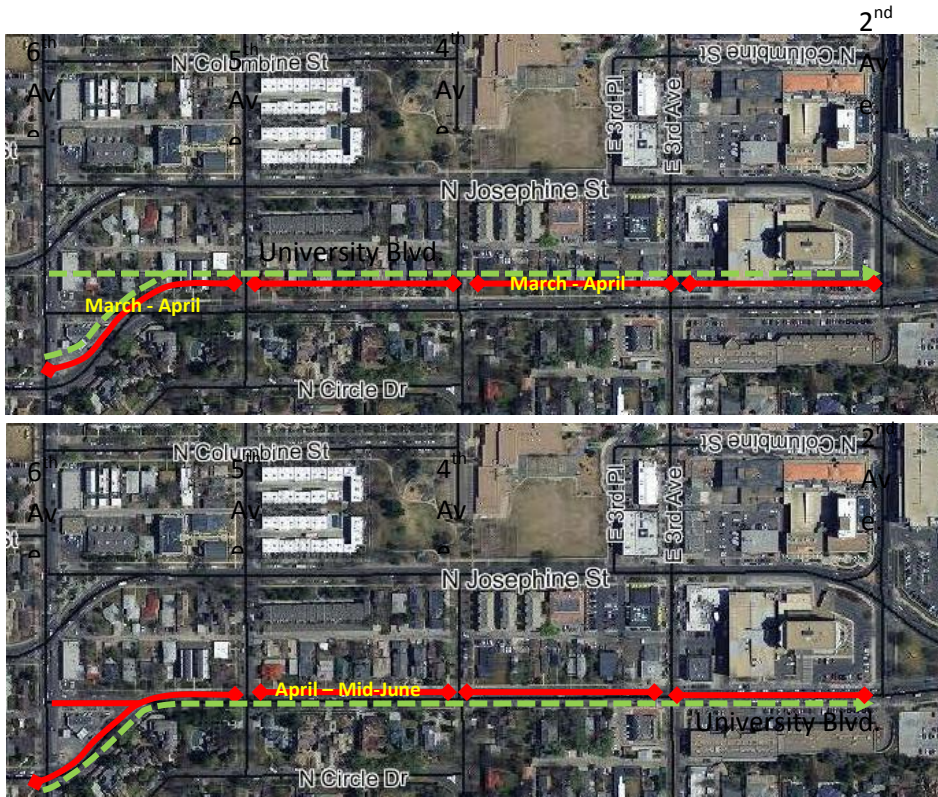
For questions please visit our website at <http://cherrycreekimprovements.com/> or contact the project hotline at 303-730-4522



North

Work Zone: 

Travel Lanes: 



**Phase 1:** Crews will be performing subgrade, curb, gutter, ramps and concrete paving in the west lanes of University from 4<sup>th</sup> to 6<sup>th</sup> starting mid-March to April.

**Phase 2:** Crews will be performing subgrade, curb, gutter, ramps and concrete paving in the west lanes of University from 4<sup>th</sup> to 2<sup>nd</sup> through April. Work will then shift to the east lanes from 6<sup>th</sup> – 2<sup>nd</sup> performing the same scope of work through mid-June.

*All dates and times are approximate and may be impacted by weather events or unforeseen conditions*